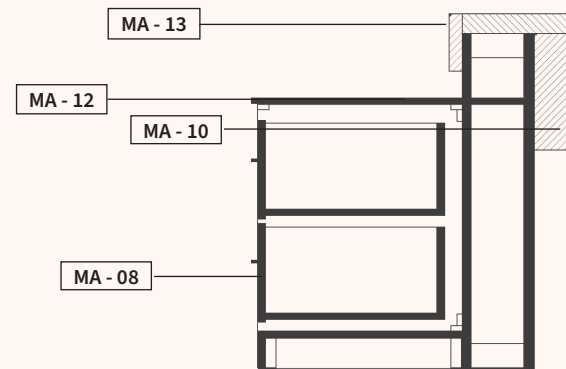


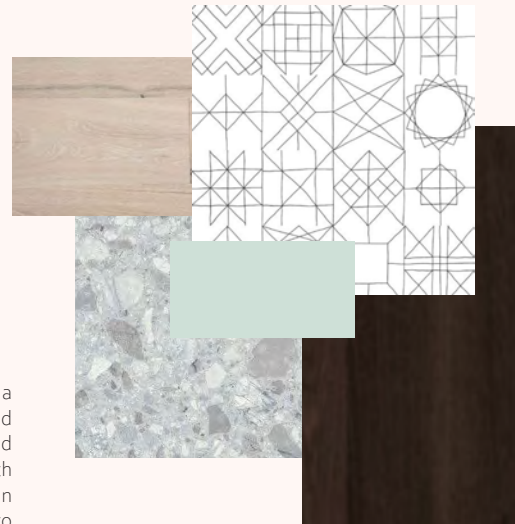
Adidas Office - Commercial Office Design



Reception desk joinery

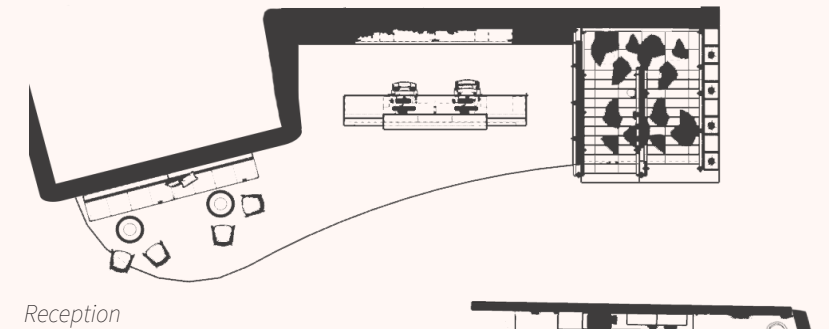
Materiality

The chosen materials feature a grey terrazzo floor, patterned feature tile, and light oak and chocolate wood finishes with pops of colour to create an uplifting and fresh place to work in.

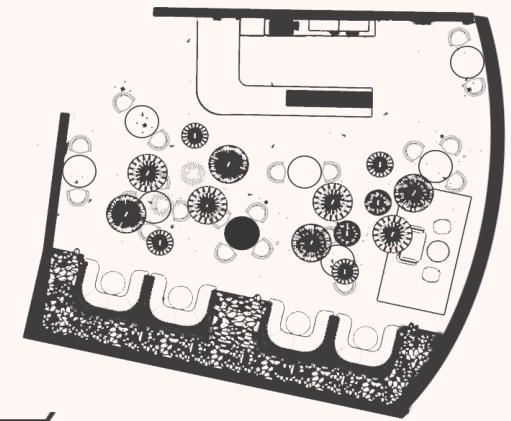


This concept for an Adidas office fit-out is in a unique premium skyscraper with high end, modern style office spaces and is a building that combines leading-edge design, technology and sustainability. With the structure of the building as an oval with a central atrium, it proved quite the challenge to create a floor plan that maximised the space. Expanding across 3 levels, the Adidas Headquarters is a modern office that allows visitors and staff to see the development of the brand's products, get a bite to eat at the cafe, work on their skills at the basketball or soccer courts, relax in the zen zone, or get some creative juices flowing in the collaboration rooms and work stations.

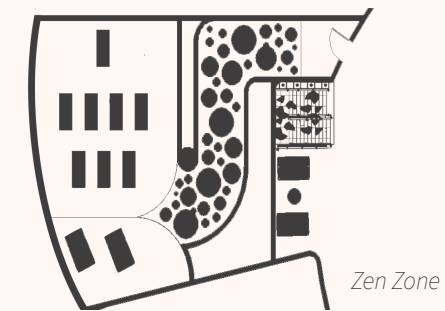
Floor plans



Reception



Cafe

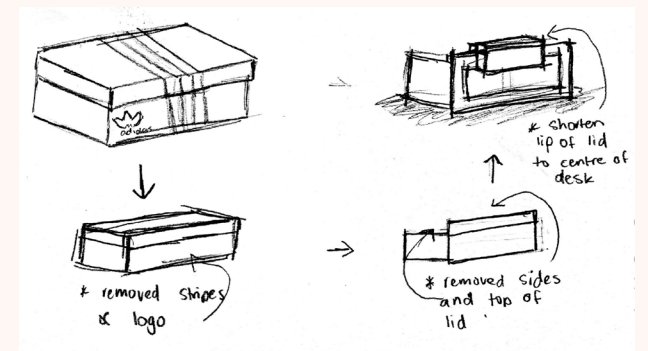


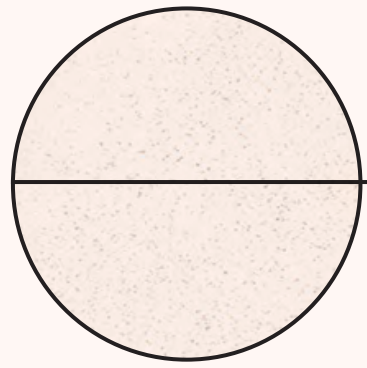
Zen Zone



Desk Ideation

Using the process of elimination to create the structure of the reception desk. As you can see the design of the desk will dominate the space with its length and harsh straight edges. This is to make its presence know to a client when they enter Adidas headquarters.





Frankie J. Boutique - Retail Design



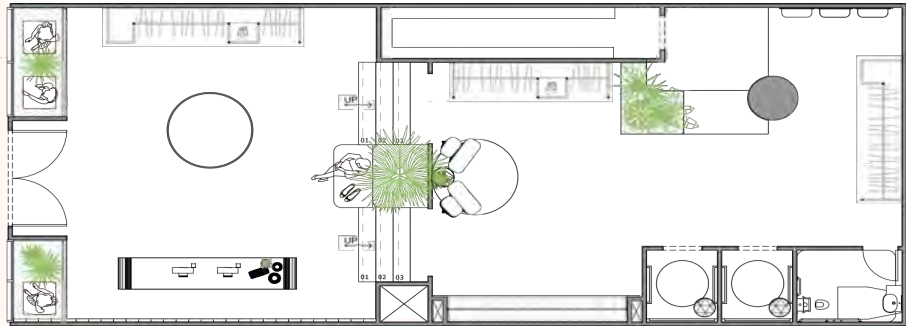
Materiality & Moodboard

The chosen materials and spatial features reflects the brands high end fashion. With a blend of natural stone, concrete, timber and pink features creates an inviting and calming space for consumers.



Frankie J. Boutique is a high-end clothing brand that encourages women to express themselves. The traffic flow design allows consumers to have an easy pathway throughout the store. The products have been strategically placed in the store to create an experience at every turn for the shoppers who enter Frankie J. Boutique.

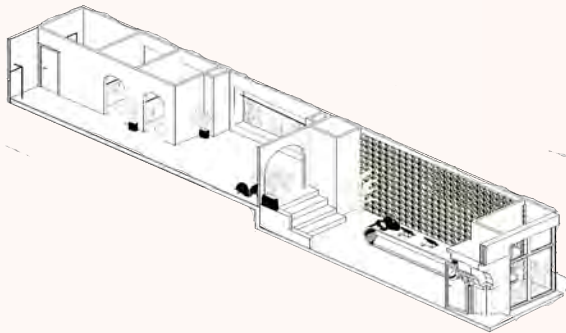
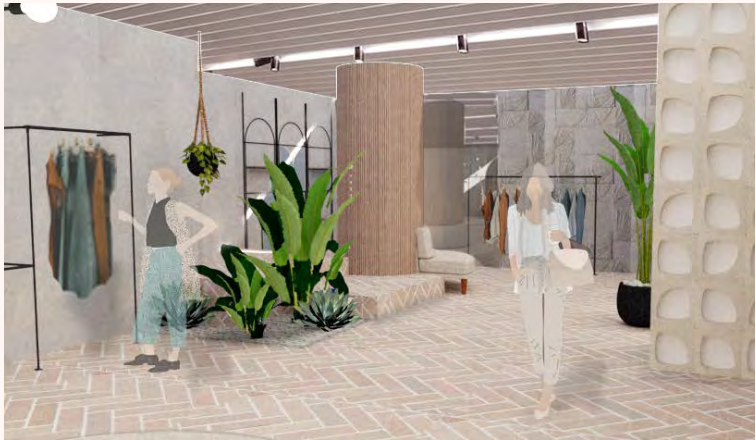
Floor plan and elevations

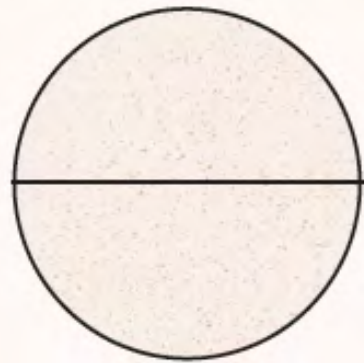


Elevation 1



Elevation 2





Brown Sugar Cafe - Hospitality Design



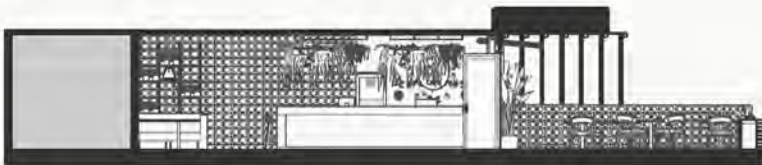
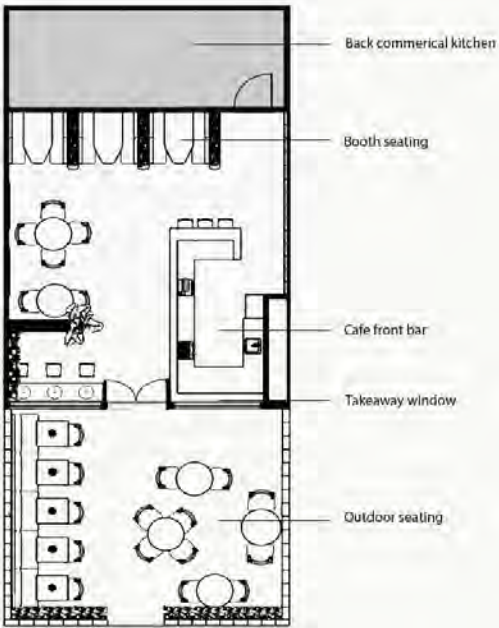
Materiality

The chosen materials feature white and black marble benches, oak timber flooring, white circular breeze-blocks, pink and olive green paint, gold finishes and plenty of greenery foliage. Creating a high-end but natural space.



This concept for Brown Sugar Cafe is a renovation of a very disconnected cafe that didn't have an identity. The atmosphere I wanted to create is fresh and inviting, a comfortable neighborhood environment where you can enjoy a conversation over good food with friends and family. The cafe lighting has a huge effect on the ambiance of the space, so warm lights with plenty of natural light were used to create a more inviting and appealing space for guests.

Floor plan



Elevations

