

# AKUBRA RETAIL STORE

## COMMERCIAL PROJECT

### ● CONCEPT

Located in The Rocks, Sydney, this Akubra store offers an Australian experience set within a richly layered interior retail store. The space is designed to exude the warmth and rich textures the Australian outback.

My creative solution to this restriction was to position a timber, laser cut-out of the iconic Australian Akubra hat across the window, so passers-by could get a glimpse of metaphors of the Akubra brand as well as the Australian outback. Upon entry, the visitor is enticed by the curved timber panelling of the feature wall display and ceiling, imitating the Australian sand dunes of the Simpsons desert. The motif of the curve is used in different elements though out the store such as the point-of-sale counter and the centre floor display to create a subtle yet eye-catching movement. A layered sand concrete built in shelving unit is used to house the bags. The space sees a mixture of textures and natural colours which are utilised to create an inviting space for the customer.

The layout was strategically designed so that the customer encounters an effortless shopping experience. The centre floor display was designed to show belts and merchandising but effectively also creates movement around the store, allowing the visitor to explore the space with ease.

### ● SITE

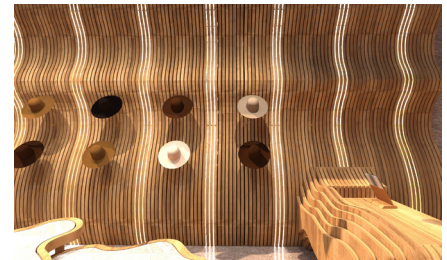
The Rocks, Sydney

### ● SOFTWARE

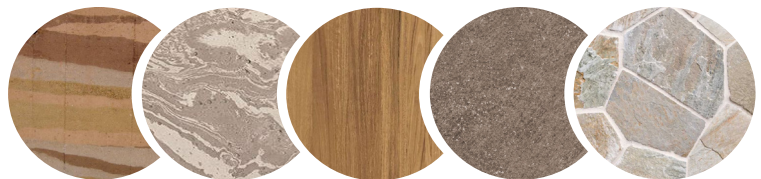
3ds Max & Revit

TAMARA  
WATSON

## 3D VISUALISATION-3DS MAX



## MATERIALITY



Layered Sand

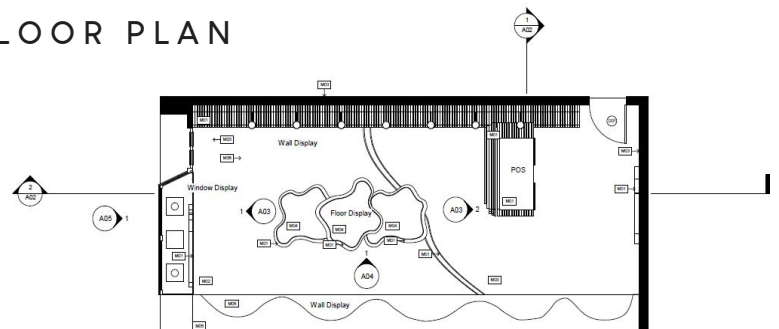
Marble

Spotted Gum

Concrete

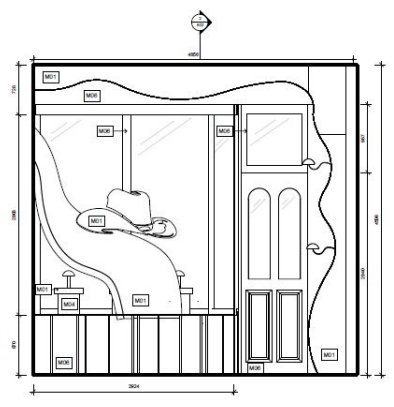
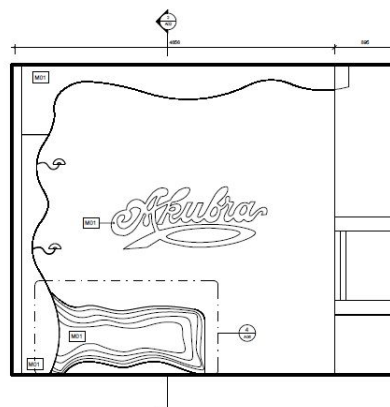
Stone Tiles

## FLOOR PLAN



1 Floor Plan  
1:50

## SECTION



# GRASSETTO APARTMENT

RESIDENTIAL PROJECT

## CONCEPT

The Grassetto Apartment is located within a newly built residential complex on the edge of Blues Point, North Sydney. In celebration of the famous Italian architect Gio Ponti, the client wanted to create a space that explored beyond the refinement of normality; to develop a space with bright colour and textured surfaces to shape the sensory experience.

Upon entry, each space is beautifully connected and provides glimpses of the extraordinary panoramic views of Sydney Harbour. The interior encourages a personal journey which aims to become a lasting memory. Throughout the apartment the repetition of curved structural walls and furniture create the perfect balance for the seemingly chaotic nature of the house. The eye-catching sculptural spiral staircase found in the centre of the Grassetto Apartment is the ultimate focal point. As you walk around the spiral, cylindrical timber panels break the view, creating a sense of anticipation with every turn. Descending the Dulux Tea Party painted staircase, the terrazzo flooring that frames the landing like a metaphorical portal that leads to the ground level.

In the master bedroom a natural, golden ambience creates the notion of intimacy and security within the client's private realm. The cool polished concrete of the curved ceiling and the warmth of the Dulux Italian Clay paired with the feature timber panelling convey a sense of wellbeing for the residents.

## SITE

Blues Point, North Sydney

## SOFTWARE

3ds Max & Photoshop

TAMARA  
WATSON

## 3D VISUALISATION-3DS MAX



## MATERIALITY



Dulux Duck egg

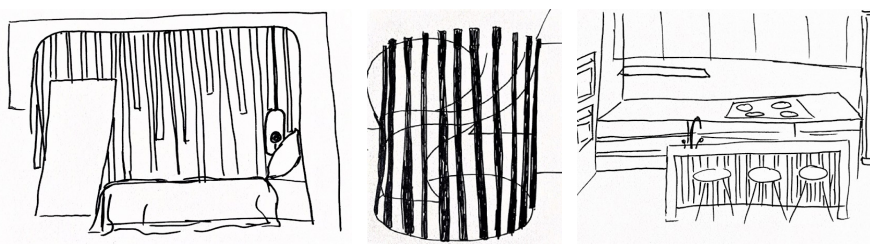
Dulux Ice Berg

Herringbone

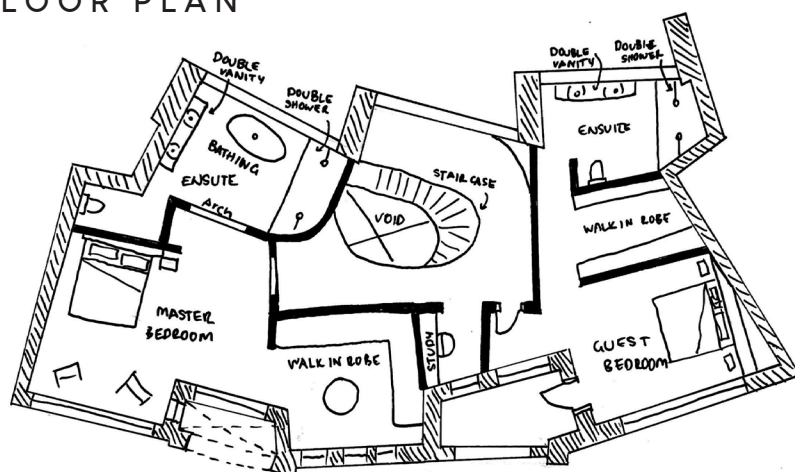
Spotted Gum

Terrazzo

## HAND-DRAWN SKETCHES



## FLOOR PLAN





# GURRGUAL HOUSE

## RESIDENTIAL PROJECT

### ● CONCEPT

The concept of this house design is solely based on movement through the house and the journey that takes place in each of the realms. Upon entry, the extended triangular courtyard narrows, creating suspense as you descend into the house. You are instantly deprived of the panoramic views with only a glimpse of the water views the house has to offer. The anticipation is heightened in the entrance hallway where a third space with large vertical shutters to break up the view, appears. The big moment is when you enter the living space, where large corner windows finally give you the anticipated panoramic. By using specific three-dimensional geometry, the experience of the view is systematically controlled creating the feeling of suspense for the visitor.

A pared back, tonal use of colour is prevalent throughout the interior. The house is surrounded by bushland that governs the interior material palette through the use of rich golden-brown hues. Descending further into the private realm, the space becomes darker, so the strategically placed windows and skylight allows ample natural light into the bottom level. The kitchen, designed as a place of relaxation, utilises the view with floor to ceiling windows and contains a reading nook for a place to unwind. The main social hub is the outdoor kitchen on the first level where there is a fully equipped kitchen and seating area to enjoy the company of others.

### ● SITE

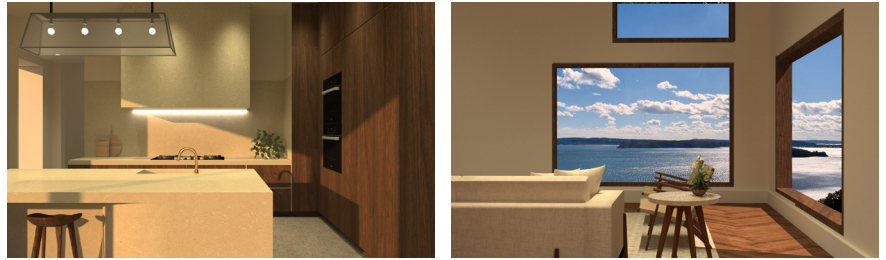
West Head, Sydney

### ● SOFTWARE

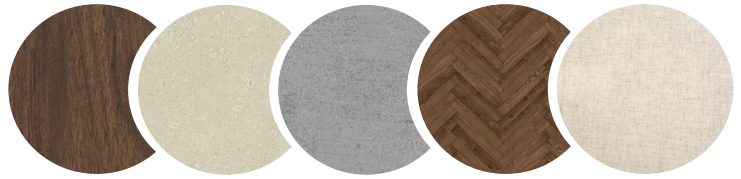
3ds Max & AutoCAD

TAMARA  
WATSON

## 3D VISUALISATION-3DS MAX



## MATERIALITY



Walnut Timber

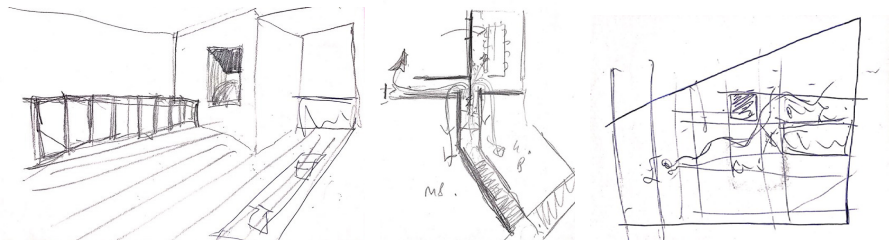
Stone

Concrete

Herringbone Timber

Linen

## HAND-DRAWN SKETCHES



## FLOOR PLAN-LEVEL 2



# BELLAGIO PENTHOUSE

## RESIDENTIAL PROJECT

### CLIENT REQUIREMENTS

- All existing windows to be retained and all new windows can be either aluminium, steel or timber framed
- Provide detailed construction drawings of new internal stair to connect Levels 5 & 6 (including details of handrail / balustrade / stair structure / floor structure junctions)
- Colour scheme must reflect and enhance your overall proposal.
- All joinery to be custom-made and detailed (Wardrobe / living area / torage / laundry etc.)

### CONCEPT

Wentworth Point is a developing, sophisticated area positioned between Sydney's CBD, Parramatta's CBD and Macquarie Park. It is part of a carefully considered living master plan for a unique urban precinct that's right next to a rapidly expanding major business and retail hub.

The Bellagio penthouse is an existing apartment building surrounded by water, natural wetlands and parklands and is a place to raise a family, with a short commute to the city.

The brief requests full documentation set for the proposed floor plans, sections and elevations of the site. The homeowners desire an open planned living environment to raise their family, with a modern materiality and a soft colour palette.

### SITE

Baywater Drive, Wentworth Point

### SOFTWARE

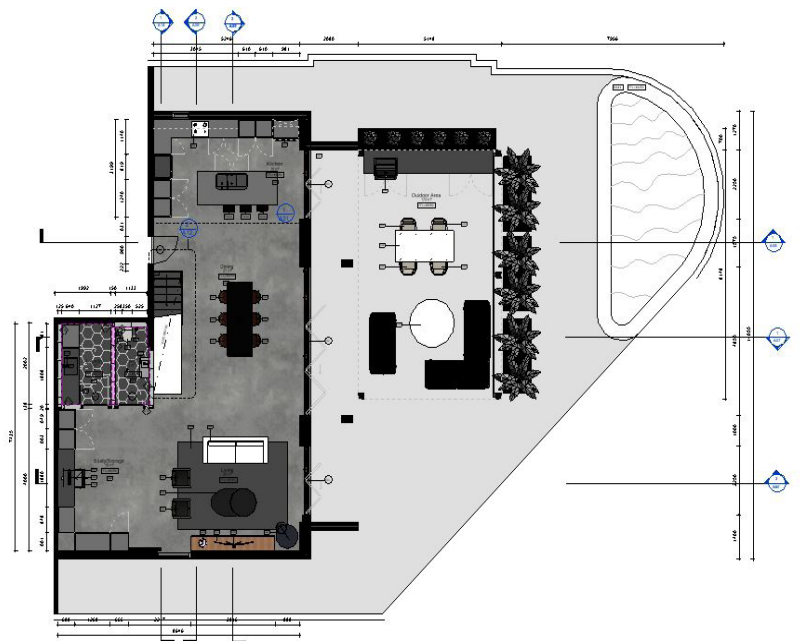
Revit

TAMARA  
WATSON

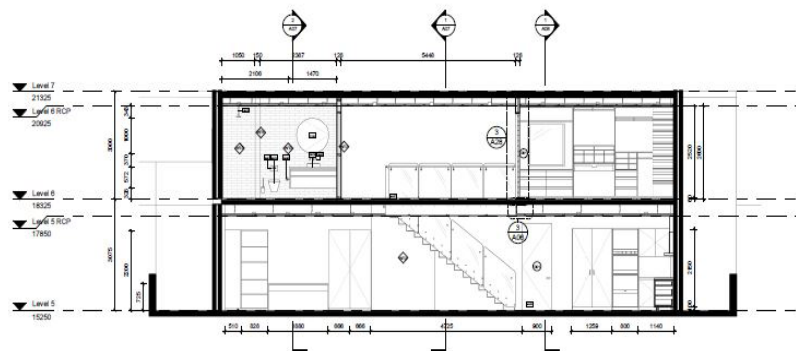
### 3D PERSPECTIVE



### FLOORPLAN



### SECTION



### STAIRCASE & BALUSTRATED DETAIL

