

Edgecliff Luxury Apartment

Site

Use	Residential
Location	Edgecliff, NSW
Year	2020

Brief & Concept

- Open plan
- Dual Key apartments
- Functional space
- Suitable for long stay
- Business & Leisure Clients
- Luxurious

The planning of the space & shape of walls were all created to smooth out the angular shape of the building, making the most of every inch of the space. Curved corners allow the space to flow and feel more open, the curved timber bulkhead and stone island bench were made to mimic the curved wall and balance the space.

Materials have been chosen with longevity and style in mind. Large format tiles flow through the space, with statement timber cladding and book match marble adding to the wow-factor of the space.

Quality finishes, open space and airy feel will provide a nice home away from home experience. Being able to relax after a long day, next to a modern floating fireplace, enjoying a drink from a cleverly concealed bar is a great way to end the day.

Software

Revit
Enscape
Photoshop

Soft Skills

Spatial Planning
Sketching
Material Selection

Renders



Lounge Room



Lounge Room



Master Bathroom

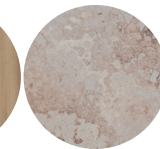
Materials



Raw White
Tiles
by Atlas
Concorde



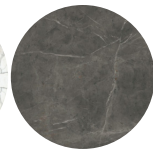
Timber
Cladding
by
Navcore



Excava
by
Caesarstone



Calacatta
Antico
by
Skheme

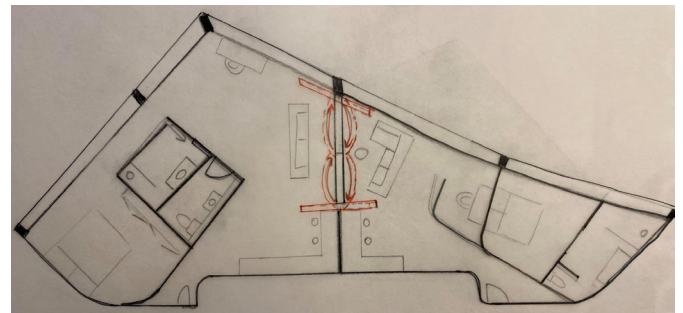


Marvel Grey
by
Atlas
Concorde



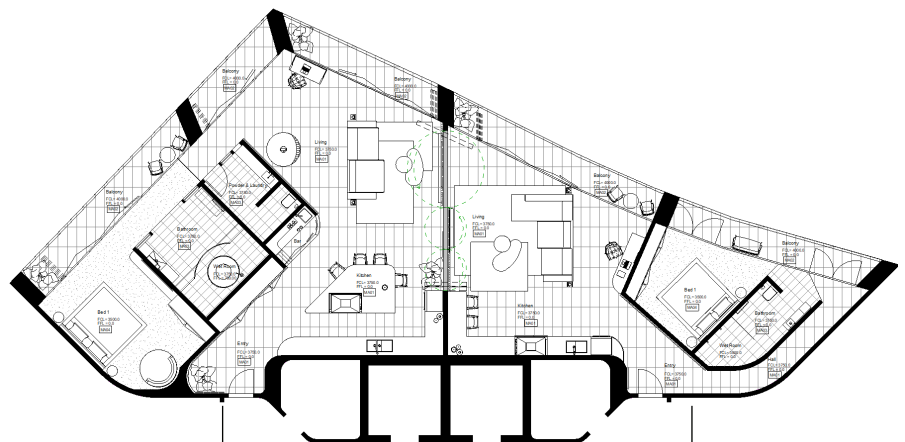
Cotton Boll
Paint
by Porters
Paint

Concept



Apartment Floorplan Sketch

Floor Plan



Apartment C

Apartment D

Amber Tiles Stanmore

Site

Use Commercial
Location Stanmore, NSW
Year 2020

Brief & Concept

- New store is to be a 'design hub'
- An inspiring space for builders, architects, designers & clients to be inspired & excited
- To reposition Amber as a brand that remains current in the industry
- Make dreams come to life
- A space to showcase what the company has to offer

The space offers 3D visualization rooms, allowing clients to immerse themselves into their dream spaces before they bring them to life. In-situ displays also offer LED display walls, with the flexibility to change the displays and remain sustainable.

The colour scheme for the 'set materials' has been selected using a minimalistic approach, so as displays change the style still works. Materials have been selected for longevity and suitability for design. A custom designed selection space and a fully operational kitchen will be the main gathering space for this new look 'design hub', the first of its kind for Amber Tiles.

Software

Revit
Enscape
Photoshop

Soft Skills

Spatial Planning
Concept Development
Brand & Technology Research
Material Selection

Renders



Selection Studio



Lounge

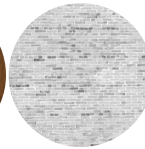


Bathroom In-Situ

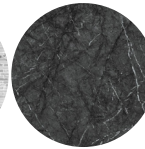
Materials



Existing Flooring



Existing Walls



Grigio Intenso by Amber Tiles



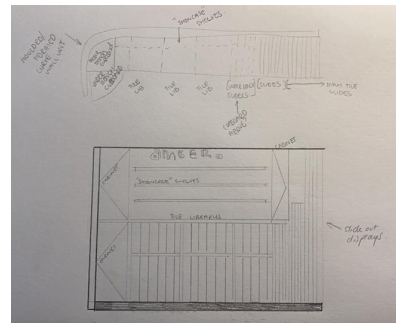
Polar White Custom Joinery by Hi-Macs



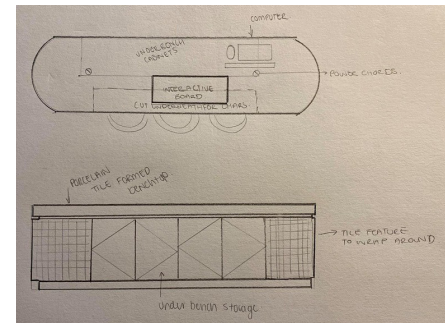
Raku White Mosaic by Teranova

Ashcroft Orange by Warwick Fabric

Concept

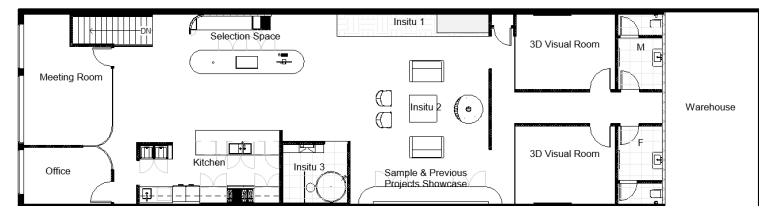


Custom Joinery Display Unit

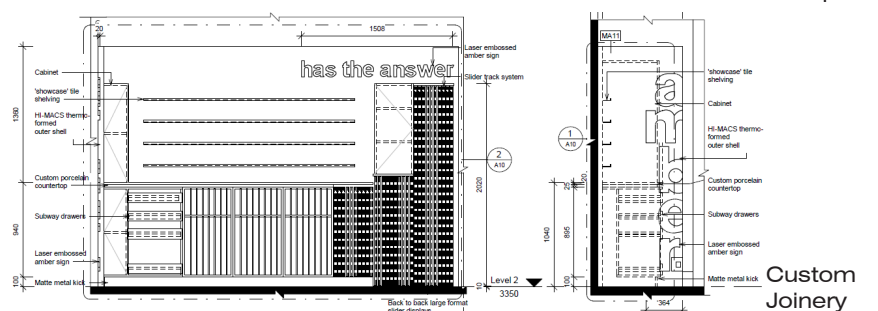


Custom Joinery Selection Table

Floor & Custom Joinery Plan



Final Floorplan



Custom Joinery

Mnemosyne

Ground Floor

Site

Use	Commercial
Location	Edgecliff,NSW
Year	2020

Brief & Concept

- Reception area for Serviced apartments
- Bar, Restaurant & Amenities
- Tie in with the style and design of the Luxury Serviced Apartments

The expansive ground floor area will serve as a major offering for the serviced apartments, with The Eatery and The Bar servicing the in house guests and their visitors. The addition of a green space will be a tranquil oasis that will be a great breakout space – momentarily ‘escaping’ from the city.

The material selections have been based off suitability for commercial spaces & tie in with the luxury apartments. Green accreditation has been considered for this project as well, using passive heating and cooling, durable materials, recycled & sustainably sourced materials & addition of greenery.

Software

Revit
Enscape
Photoshop

Soft Skills

Spatial Planning
Concept Development
FF&E Concepts

Renders



Reception



Bar

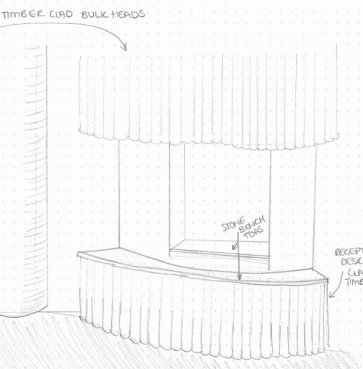


Alfresco Dining

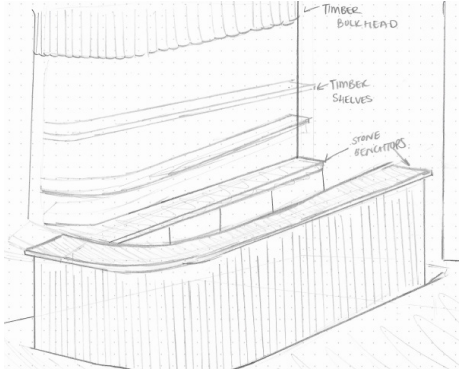
Materials

Raw White Tiles by Atlas Concorde	Western Rib Cladding by Cedar Sales	Empira White by Caesarstone	Brushed Brass by ABI Interiors	SL7 Terrazzo by Terrazzo Australia	Cotton Boll Paint by Porters Paint

Concept

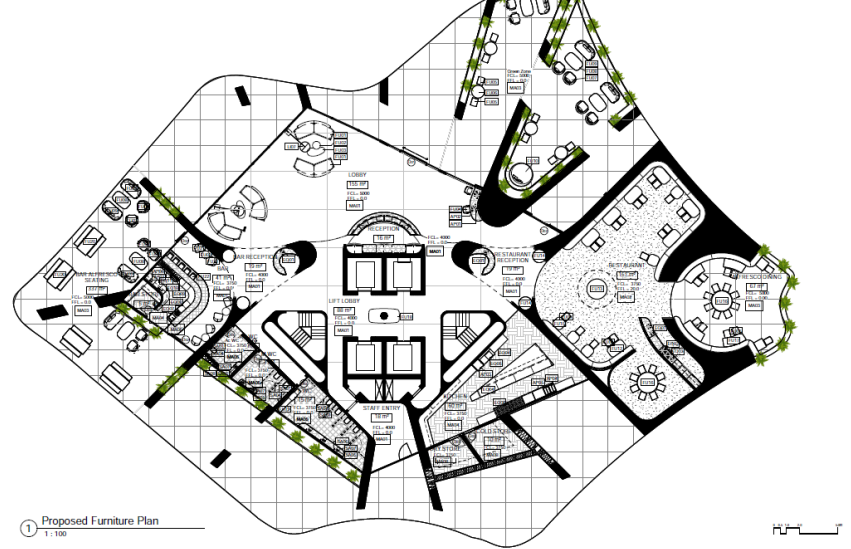


Reception Sketch



Bar Sketch

Floor Plan



166

Paddington

Site
Use Residential
Location Paddington, NSW
Year 2019

- Brief & Concept**
- Renovation of Basement, Ground Floor and First Floor
 - Addition of an attic level
 - Complete remodel of staircase
 - BCA Compliance

Working with a small space & design constraints the re-design saw the basement level expanded, the staircase moved and an addition of an attic level to the house.

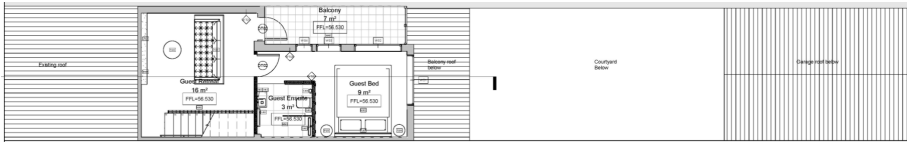
The overall design was thought up for the ‘entertaining’ personalities, adding in a home theatre, opening up the ground level and creating a ‘guest space’ upstairs that could also double as a children’s retreat when families begin to grow.

Opening the space and creating a feature staircase with a combination of timber & steel has modernized the terrace house. Modern finishes such as the large format tiles, round bath, and appliances have contrasted well with the existing wall finishes and architectural forms of the terrace house.

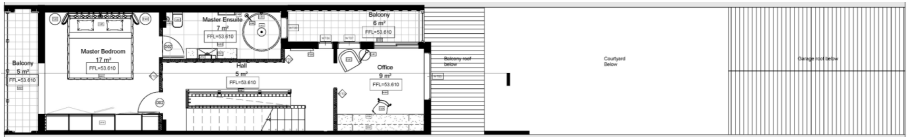
Software
Revit

Soft Skills
Location Research
Spatial Planning
Concept Development
Material Selection

Visuals



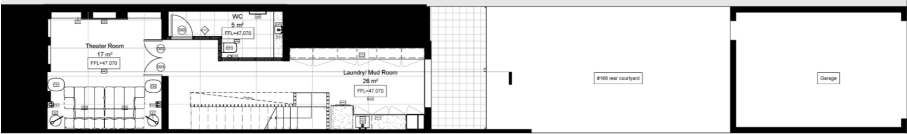
Proposed Attic



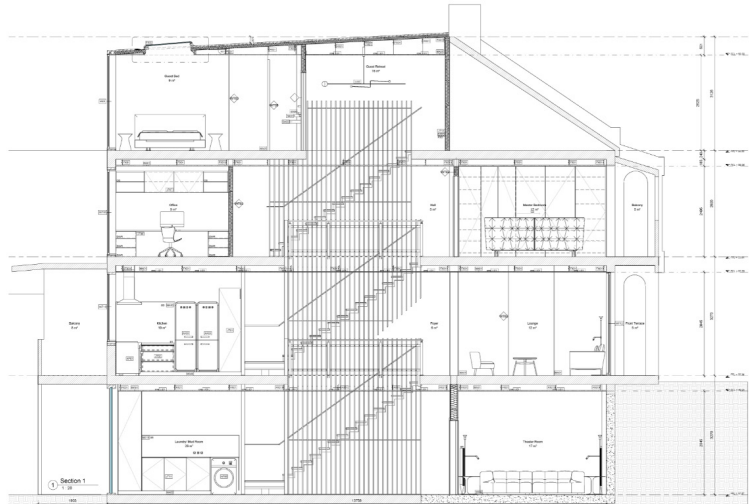
Proposed First Level



Proposed Ground Level



Proposed Basement Level

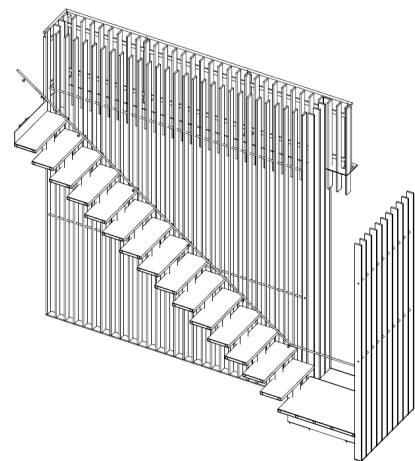


Section 1

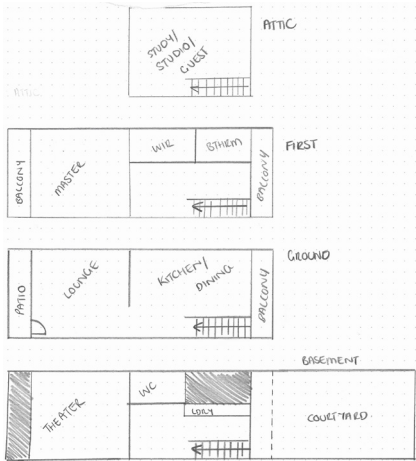
Materials

					
Dwell Pearl Tiles by Atlas Concorde	Timless Grey by Godfrey Hirst	Provence Gullwing by Southern Cross	Bleached Elm by Laminex	Cloudburst Concrete by Caesarstone	Cotton Boll Paint by Porters Paint

Concept



Staircase Design



Floorplan Sketch

