

LISA VACCARELLA

INTERIOR DESIGNER



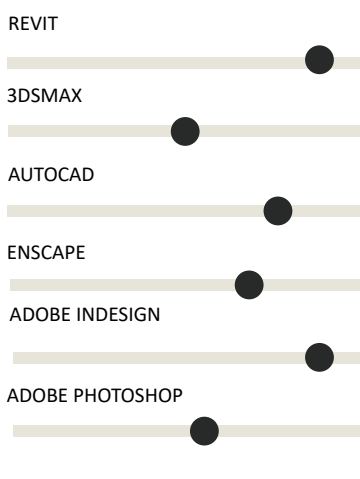
0422 927 118



lisa.vaccarella@hotmail.com



SKILLS



REFEREES

DANIEL STAEBE

National Academic Coordinator +
Senior Learning Facilitator
Billy Blue College of Design
0429 085 029
dstaebe@laureate.net.au

AMANDA TEH

Store Manager
Kookai Macquarie
0450 050 198

Further references may be provided
upon request.

PROFILE

I am a highly enthusiastic, ambitious and driven designer. I am passionate about contributing to my workplace, learning from others and developing as a professional.

I am a reliable and responsible employee, with a sharp eye for detail, organisation and time management. I am constantly inspired by the world around me in my practice as a designer and am always looking for ways to foster my creative and innovative mind. I understand the importance of working as a team and strive to communicate effectively within a productive and dynamic work environment.

EXPERIENCE

ALICIA XIBERRAS INTERIORS	2019 - Present
Interior Designer, Marketing and Social Media Manager	
COTTON ON (2018-2020) + KOOKAI (2020 - PRESENT) MACQUARIE	2018 - Present
Retail Sales Assistant	
BRIGIDINE COLLEGE ST IVES	2017 - Present
Dance Teacher	
TREND INTERIORS WEST LINDFIELD	2014 - 2018
Retail Sales Assistant	

EDUCATION

BILLY BLUE COLLEGE OF DESIGN	2017 - 2021
Bachelor Interior Design (Residential) / Bachelor of Business Nominated by Billy Blue as Interior Design Graduate of the Year in 2020.	
BRIGIDINE COLLEGE ST IVES	2011 - 2016
Higher School Certificate ATAR: 93.45 Awarded Feain Perpetual Trophy for Leadership and Loyalty in graduating year.	

KEY QUALITIES

- Creative
- Innovative
- Attention to detail
- Determined
- Independent
- Ambitious
- Time management
- Teamwork and collaboration
- Leadership
- Problem solving

INTERESTS AND HOBBIES



INTERIOR DESIGN



DANCING



WOMEN IN DESIGN



TRAVEL

AUSTRALIAN INDULGENCE

RESIDENTIAL PROJECT

i CONCEPT

'Australian Indulgence' is an eclectic, vibrant and youthful interior space, inspired by the Australian landscape and rich history of the Wilcox Mofflin Building itself. The client's fundamental desire was to have the apartment represent their unique design style, youthful nature and act as a gallery for their unique collection of furniture and artworks.

A crucial aspect to the apartment's design and layout was integrating a seamless, open plan design, which encouraged as much natural light into the space as possible. All existing ceilings, columns, brickwork and materiality were to remain in their original condition, to respect the building's character and heritage constraints.

The custom feature staircase and balustrade is constructed out of a dark timber, with a battening feature. This battening continues as an element into the bedroom space. The transparency of the staircase materials allow for natural light to pass through the entire apartment, creating beautiful mottled ambience in the mornings and afternoons.

📍 SITE

Wilcox Mofflin Ltd - Mountain St, Ultimo

🔗 SOFTWARE

REVIT, ENSCAPE, PHOTOSHOP, INDESIGN.

L I S V

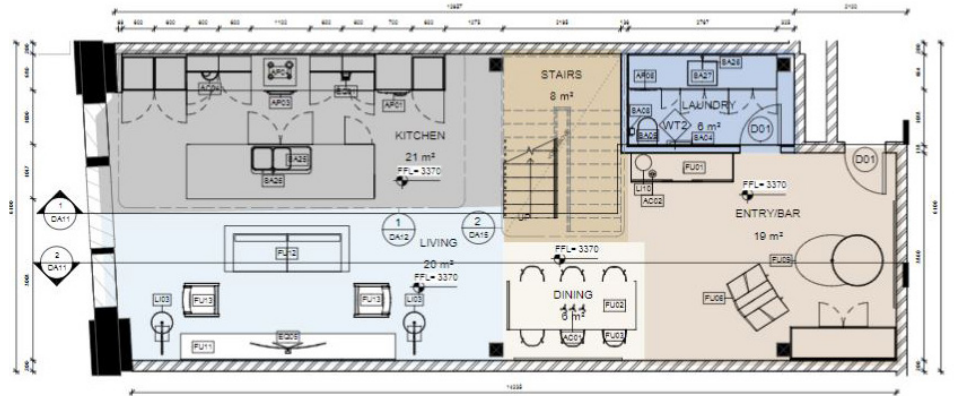
3D VISUALISATION - PHOTOSHOP SKETCH



MATERIALITY

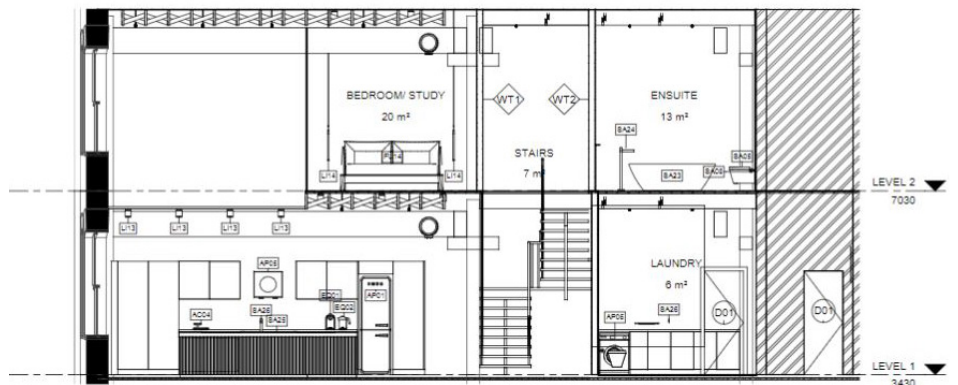


FLOOR PLAN



2 LEVEL 1 FLOOR - UNIT 2
1:50

SECTION



1 UNIT 2 SECTION 1
1:50

CONSTRUCTION OFFICE

WORKPLACE PROJECT

CONCEPT

The design of Western Sydney Concrete's head office draws inspiration from the company's roots as Western Sydney's leading concrete supplier since 1987. Moving into the modern era, the fit-out for their new head office in Penrith, NSW has become an extension of the brand's aesthetic and philosophy. Each area of the office fit out has been designed with function at the heart, whilst remaining aesthetic and on-brand.

The staff experience has been designed around activity-based working, with the inclusion of white board areas, relaxed meeting zones and a hot-desk set-up. This allows staff to move through the office environment uninterrupted, and identify which space is most appropriate to facilitate each weekly task. Despite this, the entire office remains a flexible and adaptive work environment.

Acoustic timber battening intersected with polished concrete flooring and dark feature joinery visually defines the space and subtly guides occupants from the reception and waiting area to the hot-desk facilities. The striking infusion of upholstery, feature lighting and timber battening feature welcomes guests and clients into the office. The inclusion of suspended shelving elements with hanging plants throughout the office environment incorporates elements of biophilic design, by increasing occupant connectivity to the natural environment in a concrete business park.

YEAR OF COMPLETION

2021

SITE

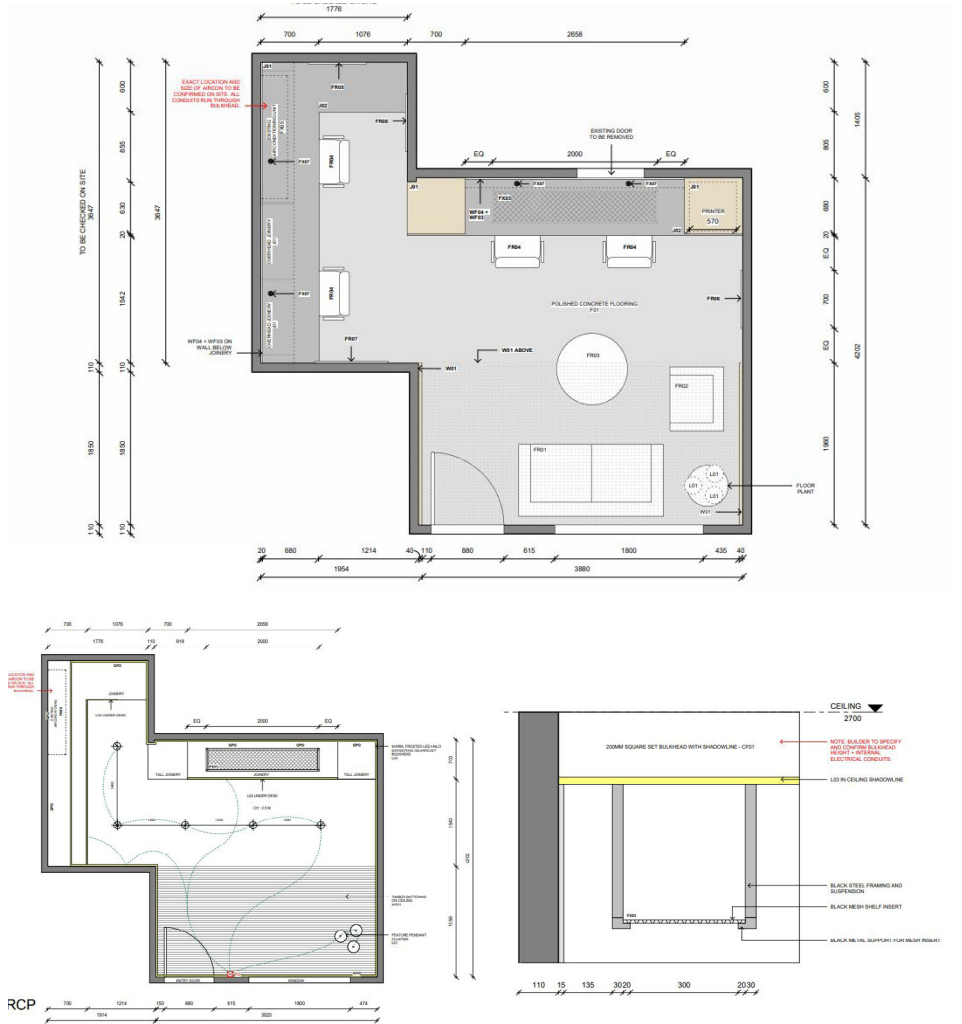
Commercial Office Fit-out, Penrith, NSW.

SOFTWARE

REVIT, INDESIGN.

LISV

FLOOR PLAN, RCP AND SHELVING DETAIL



ELEVATIONS



URBAN LUXE

RESIDENTIAL PROJECT

CONCEPT

Located in Sydney's exclusive Eastern suburbs, the 40-storey Mnemosyne Residential complex takes form in four quadrants which turn and twist, creating residential suites which boast sweeping city views. Project 'Urban Luxe' is a luxury serviced apartment, built to facilitate clientele looking for long term stays in Sydney. The apartment adopts a contemporary and luxury colour and materiality palette, but still has a timeless element and aims to make clients feel that they are truly at home.

The floorplan of the Urban Luxe serviced apartment aims to make the most of every inch of interior space, with floor to ceiling windows in the bedrooms and living area letting natural light and the Sydney skyline flood the apartment. Curved wall elements throughout the space juxtapose against the angular floorplan, bringing an element of softness and interior flow into the apartment.

The inclusion of a kitchenette as opposed to a large conventional kitchen acts as a practical element for clients staying in Sydney and wanting to make the most out of the space.

SITE

EDGECLIFF, SYDNEY.

SOFTWARE

REVIT, ENSCAPE, PHOTOSHOP, INDESIGN.

LISV

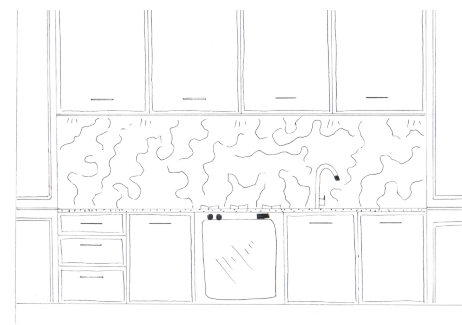
3D VISUALISATION



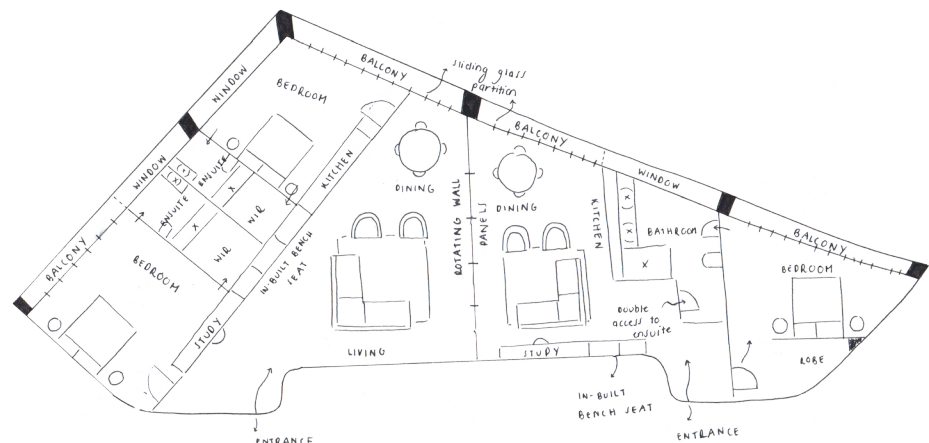
MATERIALITY



HAND-DRAWN SKETCHES



CONCEPTUAL FLOOR PLAN



GRECIAN CHARM

RESIDENTIAL PROJECT

CONCEPT

The Grecian Charm Penthouse Apartment is located in Blues Point, Sydney. The modular helix structure in which Grecian Charm is located allows each apartment space to capture different perspectives of its iconic location, with the cityscape and Barangaroo skyline rising above the serene water frontage.

From initial entry into the Grecian Charm penthouse apartment architectural elements such as arched doorways, floor to ceiling glass windows and a feature floating staircase create a sense of impressive grandeur and scale. These architectural elements and the modular appearance of the building itself are softened through the natural and raw textures used throughout the apartment. Inspiration for the has been taken directly from the streets of Santorini, featuring fresh white rendered walls, v-groove panelling, rattan joinery and feature terrazzo stone.

The textural and architectural transformation of this apartment creates an other-worldly experience for its clients, bringing the busy nature of the Sydney city into complete tranquillity and opulence.

SITE

BLUES POINT, SYDNEY.

SOFTWARE

3DS MAX, PHOTOSHOP, INDESIGN

L I S V

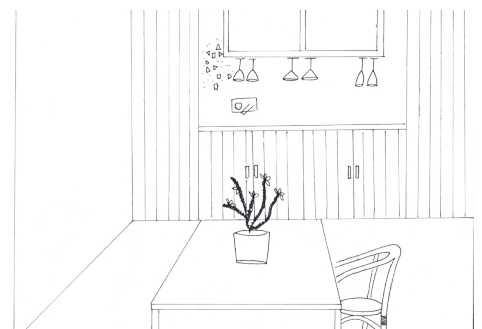
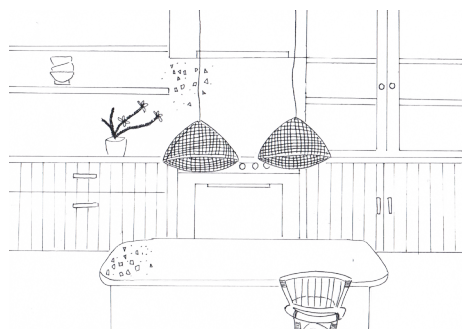
3D VISUALISATION



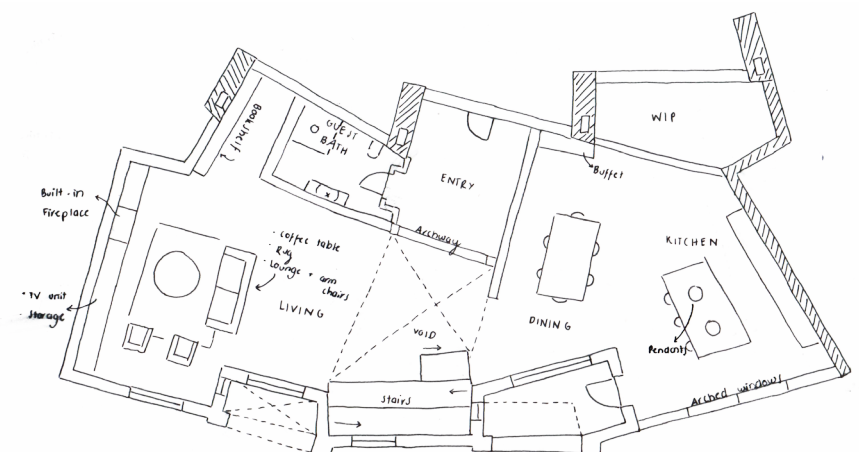
MATERIALITY



HAND-DRAWN SKETCHES



FLOOR PLAN



CONTEMP OPULENCE

COMMERCIAL PROJECT

i CONCEPT

The ground floor of the Mnemosyne complex features a luxury bar area, designed to facilitate both the private residents of the complex, and Sydney-siders wanting to dine at a luxury bar in the heart of Sydney. Curved wall elements throughout the space juxtapose against the angular floorplan of the complex itself, bringing an element of interior flow and luxury in the bar area. Behind floor-to-ceiling glass doors at the back of the bar area, a garden space and outdoor seating brings a multi-functional element to the space.

The colour and materiality palette in project Contemporary Opulence reflects the high end feel of the entire complex. Terrazzo and a feature crazy-pave blend to welcome guests into the bar area, reflecting the edgy interior to come. The inclusion of dark timber elements in the bar joinery acts to bring an element of intimacy into the space, complimented by dark green velvet upholstery and a dark green feature Frenchwash paint finish. This intimate feel is lifted through the use of brushed brass light fittings and bar elements, which sparkle and reflect amongst the ribbed glass and floor to ceiling windows in the space.

📍 SITE

EDGECLIFF, SYDNEY.

🔧 SOFTWARE

REVIT, ENSCAPE, PHOTOSHOP, INDESIGN.

L I S V

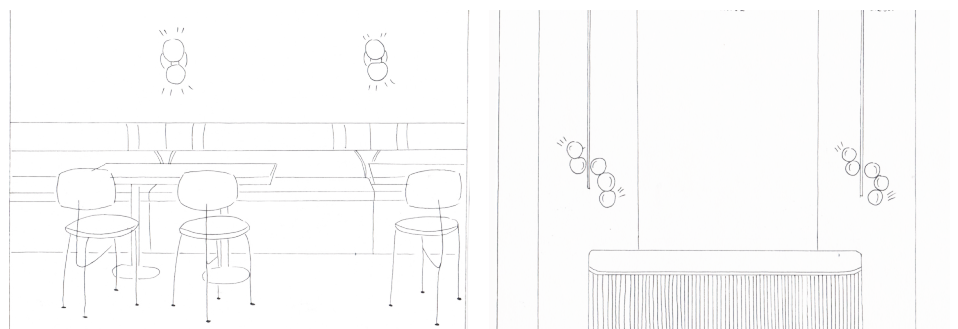
3D VISUALISATION



MATERIALITY



HAND-DRAWN SKETCHES



CONCEPTUAL FLOOR PLAN

