

THE NOBLE

MERIVALE

CLIENT

Justin Hermes, Merivale

CLIENT BRIEF

- To create a new and innovative venture for Merivale's extensive hospitality line
- A venture which is completely different to anything they already own

LOCATION

Green arched door on platform 2

SITE

The Abandoned Tunnels of St James Station

YEAR

2020

CONCEPT

This is an elegant and enduring 1930s inspired underground gin distillery, designed to awaken and excite your senses from start to finish. The consumer is encouraged to dive deep into Merivale's persona of a luxurious and opulent character as they make their way through the grand entrance of the abandoned tunnels of St James Station. The furniture selection plays tribute to the era of the tunnel's beginnings, reflecting a concept of luxury and sophistication. The rich materials evoke an intelligent finesse, drawing inspiration from the raw colours and textures of the botanic creations used within Merivale's very own gin line.

SOFTWARE

- Revit
- Photoshop

SKILLS

- Concept development
- Sketching
- Materials board
- Moodboard
- Branding
- Visualisations
- Documentation

3D VISUALISATIONS



Main Bar



Entrance



Restaurant



Lounge Bar

MATERIALITY



DIGITAL SKETCHES

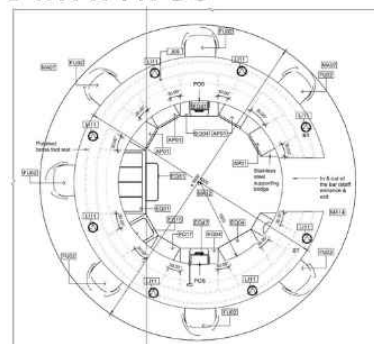


Entrance | Bar Seating | Main Bar

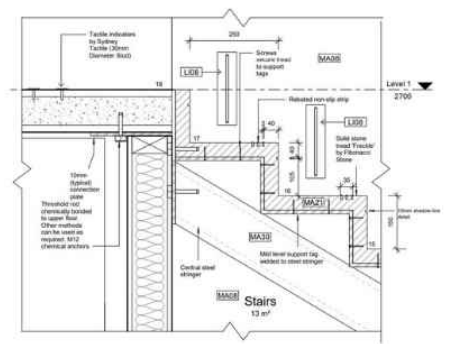


Main Bar

DRAWINGS



Lounge Bar Detail Plan



Stair Section Joinery Detail

METRICON HOMES

SYDNEY
HEADQUARTERS

CLIENT

Mario Baison

CLIENT BRIEF

- To create a space which touches on sustainability
- To celebrate Metricon's design philosophy and story through materiality
- To incorporate Metricon's identity through materiality
- To create a bright, light-filled space which embodies a stylish and contemporary design

LOCATION

1 Bligh Street, Sydney

SITE

Bligh Street Tower

YEAR

2020

CONCEPT

This space embodies both a superior and elegant fit-out, tailored towards Metricon's brand identity and it's unique design philosophy of bright, light-filled spaces, with a stylish and contemporary appeal.

The reception area has been designed to evoke this philosophy, whilst also paying tribute to its location, the architecture of the building and its high-end attributes it has on show. Through this upmarket design, cutting-edge technology and new and innovative sustainability measures were welcomed, creating a harmonious and flexible working environment for all staff at Metricon.

SOFTWARE

- Revit
- Photoshop

SKILLS

- Concept development
- Sketching
- Materials board
- Moodboard
- Visualisations
- FF&E

3D VISUALISATIONS



Reception



Reception



Reception



Reception

MATERIALITY



Atelier Velvet
Upholstery Textile by
Instyle



600mmx600mm
Stellar Tile by Design
Tiles



Polished Brass by
Chemetal



Rich Bronze High
Pressure Laminate 2408
by Wilsonart



Soft Cream SSROW by
Supawood



Cloudburst Concrete
by Caesarstone



Statuario Maximus
by Caesarstone



Diva Hand Knotted
Silk/Wool Rug by
Designer Rugs

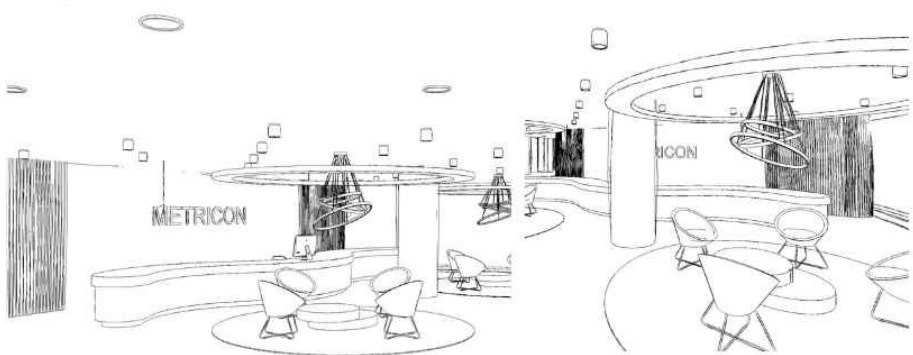
DIGITAL SKETCHES



Hot Desking



Communal Lunch Break Zone



Reception

Reception

NINA & PATRICK REID

RESIDENTIAL
APARTMENT

CLIENT

Nina & Patrick Reid

CLIENT BRIEF

- Location of bathroom and bedroom doorways designed to minimise overlooking
- Seamless and open-plan design
- Client to provide all fixtures, finishes, appliances, furniture, rugs, lighting fixtures, art collection, and hi-fi equipment
- Industrial style
- Black aesthetic
- Incorporate tones of grey
- Metal to be incorporated within design

LOCATION

46-52 Mountain Street, Ultimo

SITE

Wilcox Mofflin Ltd. Multi-Residential Development

YEAR

2020

CONCEPT

This apartment pays tribute to the industrial, recycled, and raw textures found within the building's architecture. The use of different shades of black and grey help to set the scene for an industrial focus design.

SOFTWARE

- Revit
- Photoshop

SKILLS

- Concept development
- Sketching
- Materials board
- Moodboard
- Visualisations
- Documentation

3D VISUALISATIONS



Kitchen



Kitchen

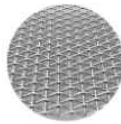


Kitchen



Kitchen

MATERIALITY



Mesh Wire by Metal Mesh



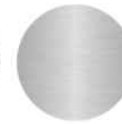
Polished Concrete by BORAL



Decorated MDF Black by Laminex



Aluminium Checker Plate by Arcan Aluminium



Stainless Steel by Chemetal



Hybrid Kardean Design Flooring



Empira Black by Caesarstone



Airy Concrete by Caesarstone



Black Anodized Aluminium



White on White Paint by Dulux



Timeless Grey by Dulux Paints

DIGITAL SKETCHES

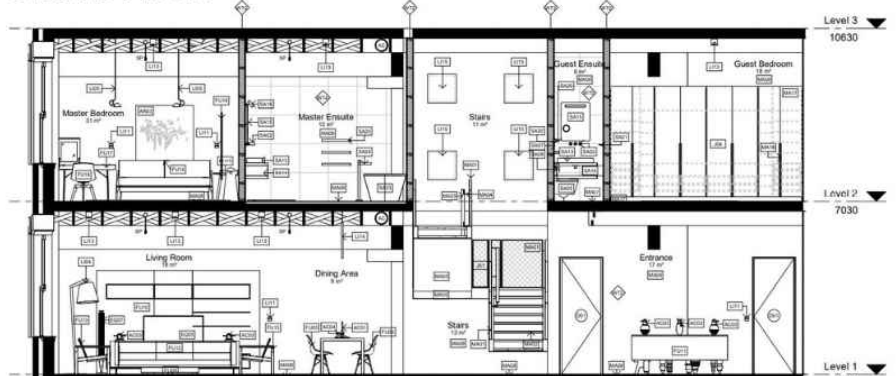


Living Room | Dining Room



Kitchen

DRAWINGS



Section

LE VELO CAFE

BIKE RETAIL & CAFE

CLIENT

Sue & Andy Baker

CLIENT BRIEF

- Pet-friendly
- Recycled materials
- Industrial
- Australian commissioned street art
- Splashes of bold, bright colours
- Suitable for cyclists, joggers, walkers, families, and locals

LOCATION

48 Baywater Drive, Wentworth Point, NSW, 2127

SITE

The Bellagio

YEAR

2020

CONCEPT

The coffee and bike culture that thrives throughout inner Sydney, also exists in Wentworth Point due to its proximity to Bicentennial Park cycleways; this culture will inform the overall design concept of this café/retail venture, and in return, will become part of the local lifestyle, catering to the local community and those passing by. A portable takeaway van will be available opposite the exterior of the building, for those who need to keep moving and don't have time to dine in.

The materiality chosen throughout the space touches on an electric and industrial style fit-out, with the use of recycled materials, bold colours and commissioned street art.

SOFTWARE

- Revit
- Photoshop

SKILLS

- Concept development
- Sketching
- Materials board
- Moodboard
- Visualisations
- Documentation

3D VISUALISATIONS



Bar | Seating



Entrance



Le Velo Takeaway Cafe

MATERIALITY



Mesh Wire by Metal Mesh



Polished Concrete by Polished Concrete Solutions



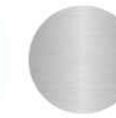
Glossy Gold Metallic Paint by Resene



White Oak Light Timber by Timber Supplies Sydney



White on White Paint by Dulux



Stainless Steel by Chemetal



Grey Mosaic Tile by Beaumont Tiles



Natural Maple Antique Timber by Timber Supplies Sydney



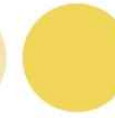
Water Raceway Finish Wall Paint by Dulux



Bright Delight Finish Wall Paint by Dulux



Polished Brass by Chemetal



Dandelion Yellow Finish Wall Paint by Dulux

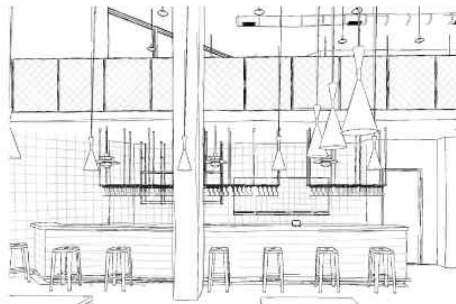


Plywood Maple Veneer by Timber Supplies Sydney

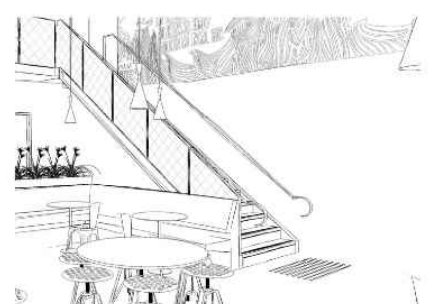


Eimon Nordic Semi-Aniline Leather by Instyle

DIGITAL SKETCHES

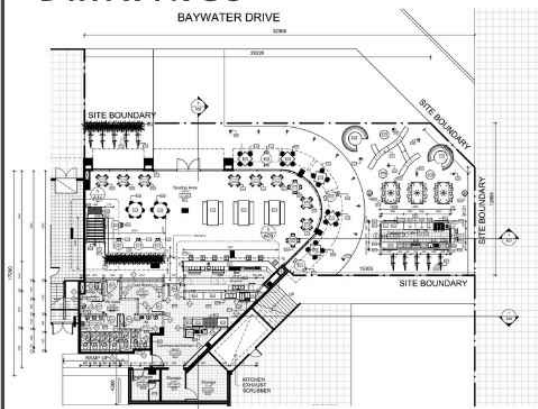


Bar

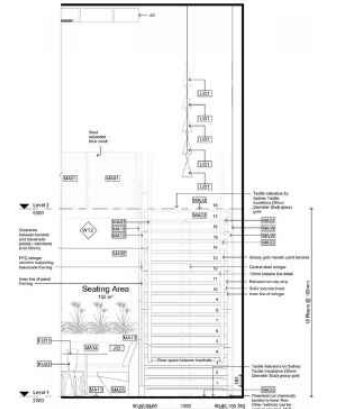


Stairs

DRAWINGS



Ground Floor Plan



Stair Elevation

A JOURNEY OF HOPE

PAVILION DESIGN

CLIENT

Biennale Sydney

CLIENT BRIEF

- To push the boundaries of conventional/pragmatic/real world design and propose an innovative and exciting interactive environment designed to engage people
- To incorporate a form of digital technology within the final design

LOCATION

Sydney, NSW

SITE

Cockatoo Island

YEAR

2020

CONCEPT

The overall design concept has been driven by the use of interactive digital technology. When one enters the pavilion, their presence is detected through a series of 3D tracking cameras. These tracking cameras follow the viewer throughout the pavilion, where they emit a light of colour, through a high directional LED system. The colours of the light are symbolic of the three concepts that run through the pavilion; the unknown, the entrapment, and hope. The colour of light projected is dependant in the area in which one is standing.

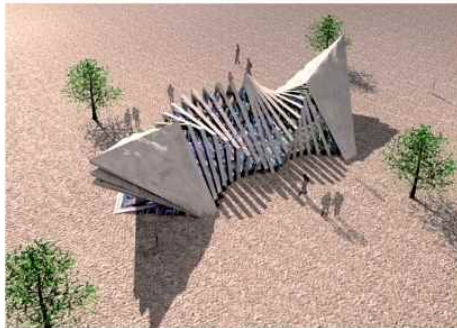
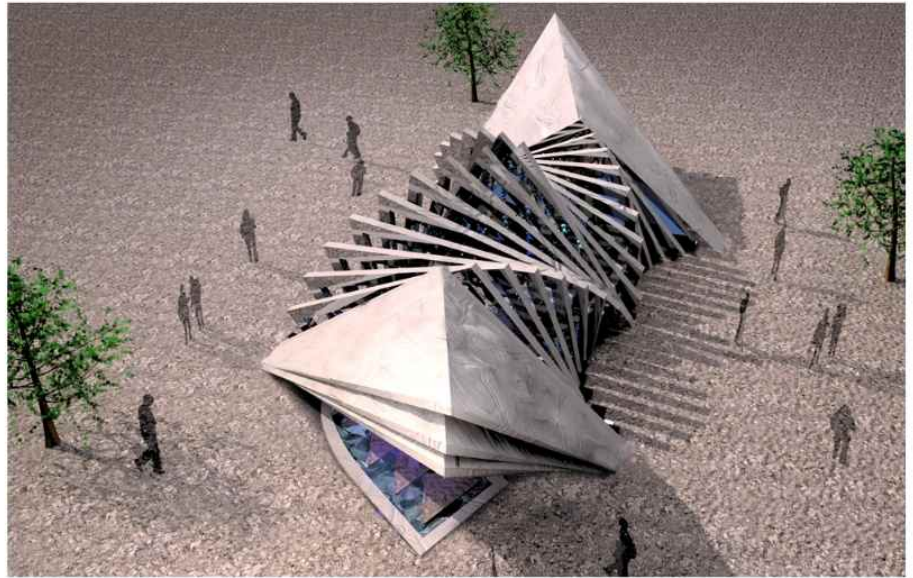
SOFTWARE

- 3ds Max
- Photoshop
- V-Ray

SKILLS

- Concept development
- Sketching
- Materials board
- Moodboard
- Visualisations

3D VISUALISATIONS



MATERIALITY



Weathered Concrete
Supplied by Hanson
Australia



Glass Supplied by
Greater Glass



Black Steel Supplied by
Edcon Steel

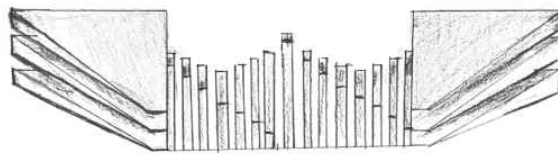


Rocks and Soil Supplied
by Menai Sand and Soil
Commercial

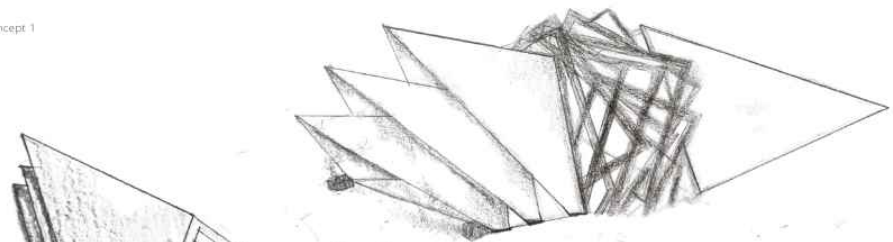


Foliage

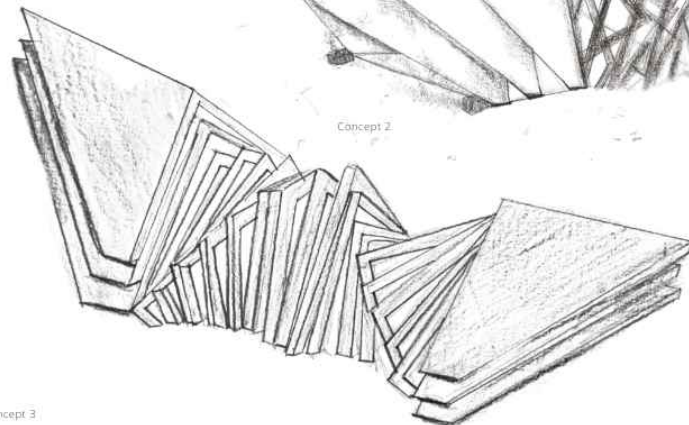
HAND-DRAWN SKETCHES



Concept 1



Concept 2



Concept 3

WHISKEY LAB

WHISKEY DISTILLERY, BAR & RESTAURANT

CLIENT

Luke Sheen, a Melbourne socialite

CLIENT BRIEF

- A design which puts health, sustainability, culture, and interactivity at the forefront of the design process
- To have a heavy focus on air quality, closed-circle value adding, social inclusion and interactivity possibilities

LOCATION

Docklands Drive/Pearl River Road, Melbourne

SITE

D11 The District/434 Docklands

YEAR

2019

CONCEPT

The vibrant and alive culture of Melbourne has made this new venture a meeting spot for the busy socialites and those who like to call themselves a whiskey lover.

Whiskey Lab was designed with a considerable amount of thought for people with physical disabilities, energy conservation, resource conservation, harassment and safety, social vs. binge drinking, and non-digital interactivity in mind. These key areas were put under the microscope to help deliver a design which touched on sustainability, health, culture and interactivity at its forefront.

SOFTWARE

- Revit
- Photoshop

SKILLS

- Concept development
- Sketching
- Materials board
- Moodboard
- Visualisations

3D VISUALISATIONS



Whiskey Bar | Bar Seating



Nook Seating



Unisex Bathrooms



Distillery

MATERIALITY



Matte Walnut Timber Ceiling Lining Board Finish by Australian Timber Ceilings



Polished Concrete by Boral



Silver Beach Black Encaustic Look Square Tile by Tile Cloud



Stainless Steel by Chemetal



Premium Walnut by Wood Workers Source



Iron Rusted Metal



Black Powdercoat Steel



Greenery

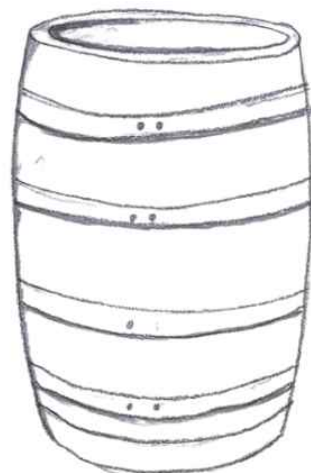


San Selmo Reclaimed Original Brick by Austral Precast

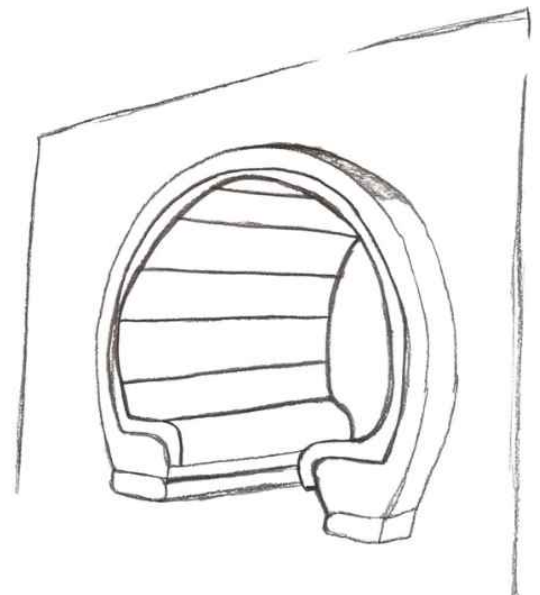


Caledonian Highland Pull-Up Aniline Leather by Instyle

HAND-DRAWN SKETCHES



Wooden Barrel



Nook Seating

BLACK STAR PASTRY

LARGE EXHIBITION STAND

CLIENT

Black Star Pastry

CLIENT BRIEF

- A cosy, relaxed, and warm space
- A space which pays tribute to the brand's identity
- Materiality must be quick and easy for builders to assemble and disassemble

LOCATION

Driver Ave, Moore Park, NSW 2021

SITE

Hordern Pavilion

YEAR

2019

CONCEPT

It was their very famous and in high-demand Strawberry and Watermelon Cake which drove the overall design features of this casual yet sleek design. It is very bespoke, with custom made joinery, lighting fixtures, and wall panelling, which has been carefully crafted to mimic the ingredients found within their very own Strawberry and Watermelon cake. In particular, you will see this strawberry shape within the bespoke lighting elements, bespoke wall panelling, and bespoke stools and tables.

SOFTWARE

- Revit
- Photoshop

SKILLS

- Concept development
- Sketching
- Materials board
- Moodboard
- Visualisations

3D VISUALISATIONS



Exterior Perspective



Cake Demonstration | Seating



Coffee Counter | POS



Front Facade

CLAY MODEL RENDERS



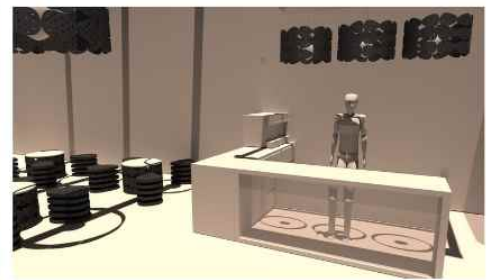
Exterior Perspective



Cake Demonstration



Seating



Coffee Counter | POS

MATERIALITY



Satin Gold Aluminium by Chemetal



Light Oak LooseLay Timber Flooring by Farrdean



Black Flint Decorative Laminate by Laminex

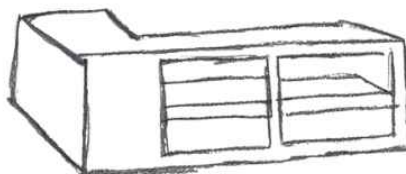


Glass Display Panel by Showfront

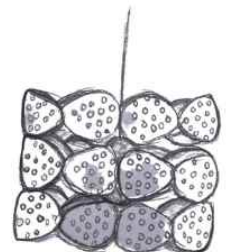


Artificial Greenery

SKETCHES



POS



Bespoke Modular System Pendant