

## CLIENT BRIEF

Design a 3D physical experience to promote the awareness of a selected and researched social issue. It should be a 3D architectural environment located in an prescribed space. It may be static or mobile and must allow for visitors to interact with both the physical and digital space. The space must be creative, innovative and essentially capture your subject matter and associated emotions.

## LOCATION

Botanical Gardens, Sydney  
Australia

## YEAR

2020

## PROJECT DESCRIPTION

The Royal Botanical Gardens will be graced with the Stacked Pavilion, Sydney's secret oasis in the heart of the city. With its lush flora and fauna wrapping around Sydney's harbour, this space occupies one of Sydney's most prime locations. The Stacked Pavilion is an exploration of designing sustainably and in a way that can educate the general public about the important issue of preserving the environment.

The philosophical approach towards the structure of the pavilion stems from the Australian landscape, and more specifically, how this is usually displayed portrayed in the contour lines and shapes of a topographic map. The curvilinear nature and its organic and undulating lines allow for the exploration of different levels within the pavilion structure and the ground surrounding it. The various levels and the curves present in the design mimic those of its surroundings; the ocean and nature. The façade and structure enabled a sense of scale, shadow, and light to be manipulated to provoke different emotions.

## SOFTWARE USED

3ds Max  
SketchUp  
Photoshop  
V-ray

# THE STACKED PAVILION

## 3D VISUALISATIONS



## MATERIALITY



Crazy Paving,  
Sydney Tile Gallery

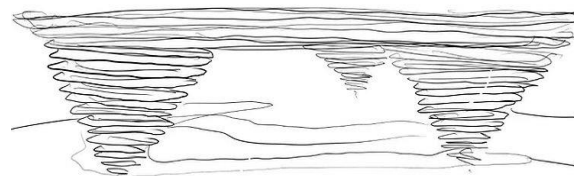
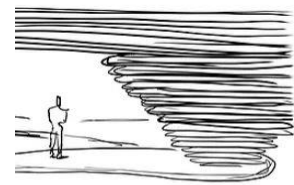


White American Oak,  
Britton Timbers

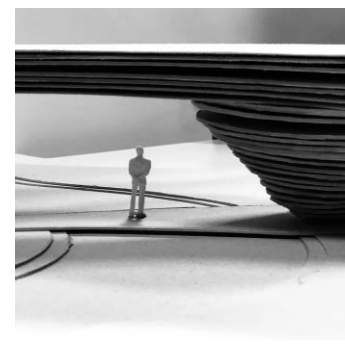
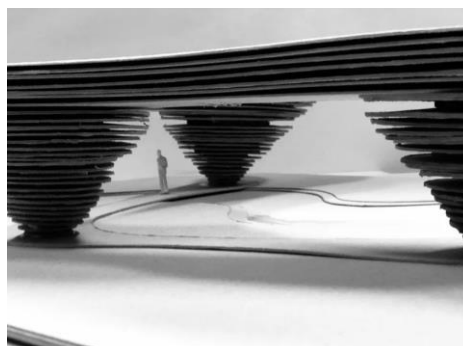


White cement, Cement  
Australia

## SKETCHES



## ANALOGUE MODEL



# CLIENT BRIEF

- Propose an interior design concept that transforms an architectural object into an interior condition.
- Explore how the theoretical, psychological and behavioural aspects of a person can impact the interior and architectural decisions of their residence.

# LOCATION

Mount Yoshino, Japan

# YEAR

2020

# PROJECT DESCRIPTION

Situated high in the mountains, away from the hustle and bustle and amid all the Cherry blossom trees, lies the oasis that is, Gurrugal House. This architecture celebrates a modern take on a Japanese-style home that represents minimal structures and is filled with beautiful symmetry. Designed to serve as a retreat, to escape from the reality of a lawyer's fast pace life living in the busy city of Tokyo, this space immediately provides the user with a sense of relaxation and isolation from the rest of the world.

This elevated home experiments with an internal configuration of space, a society of rooms throughout the house, which provides a journey throughout each space, whilst keeping the formation of a spacious layout. Broken up into three separate wings; the living, sleeping, and dining, each space offers a different emotional experience and allows for different journeys throughout.

The material palette throughout this house is minimal and consists of warm woods, concretes and metals which allow for a large collection of colourful art, spread throughout the house to bring a vibrant and homey feel to the space.

# SOFTWARE USED

- 3ds Max
- SketchUp
- Photoshop
- V-ray
- Revit

# GURRUGAL HOUSE

## 3D VISUALISATIONS



## MATERIALITY



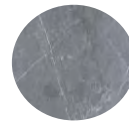
Corten Steel, Australian Steel



Avenue Mist, Skheme



Carriere max gent high honed, Skheme

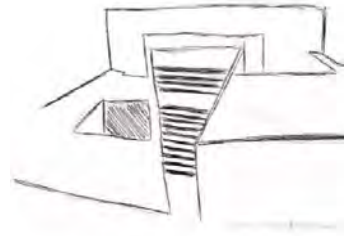


Etienne high honed, Skheme

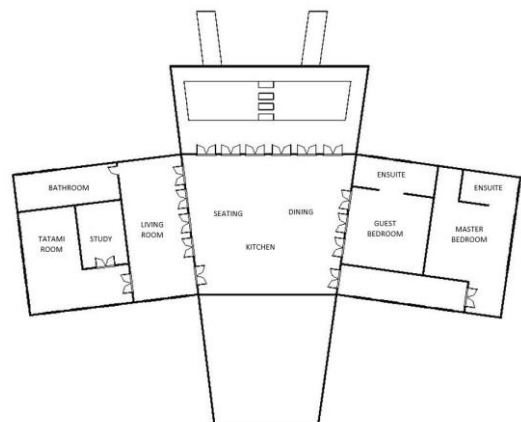


American Ash, Britton Timbers

## SKETCHES AND MOOD BOARD



## FLOOR PLAN



# CLIENT BRIEF

- Create a 2D–documentation set in AutoCAD®/Revit® of a nominated commercial design.

# LOCATION

95 Macleay Street, Potts Point, 2011

# YEAR

2021

# PROJECT DESCRIPTION

Located in Sydney's Potts Point, a suburb known for its buzzing cafe scenes, long lunch destinations, and boutique fashion stores. This Lush cosmetics retail store expresses a minimal tone throughout the site and the material composition of the interiors which allow for the products to stand out as the main feature.

The site is divided into three separate rooms which are defined by high ceilings and large iron windows. Each room features a slight change in materiality and shape however all feature elements maintain the same curvilinear nature, creating a sense of symmetry throughout the store.

The first room offers a sense of arrival with existing concrete floors, pink concrete custom-made feature tables, and POS counter which immediately begins the customer on their journey throughout the store. As the customer progresses further into the store the second room is defined by rich Casablanca jade tiles which add a touch of colour to the space. The focus of this room is to incorporate a mix of interactivity. These sinks allow for the client to have the freedom to browse the store and try out products in their own time and space.

The end room is dedicated to the spa. A space rich in natural light, linen curtains, Tasmanian oak timber joinery, and concrete floors. These materials, layout, and fixtures and fittings all aim to create a calm space for the user's experience.

# SOFTWARE USED

- 3ds Max
- SketchUp
- V-ray
- Revit

# LUSH COSMETICS

## 3D VISUALISATION

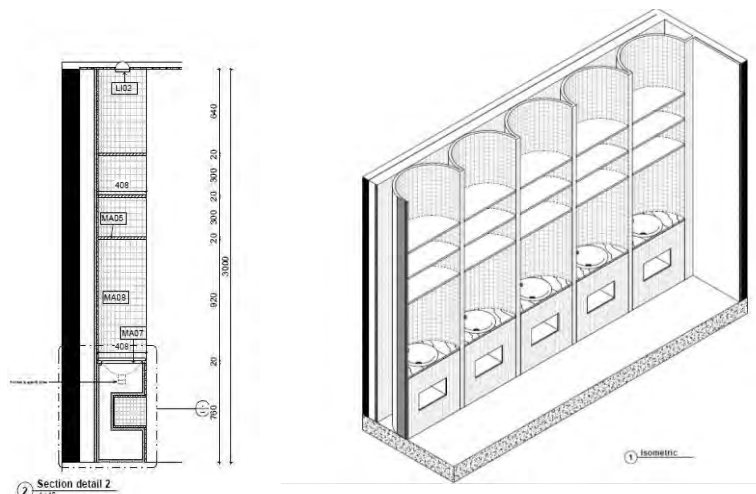
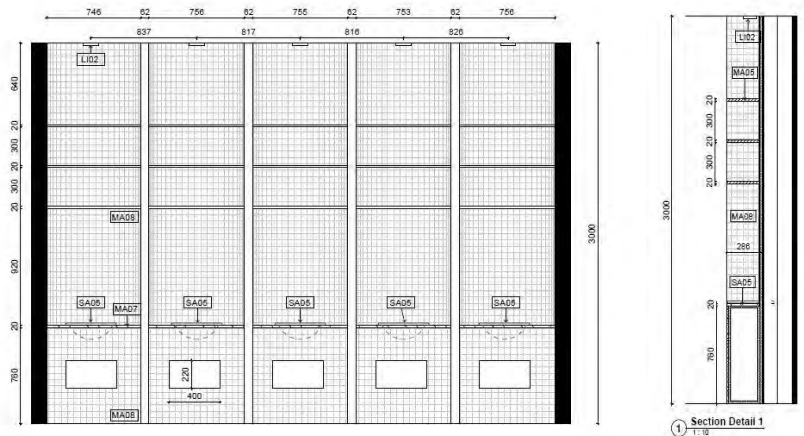


## MATERIALITY



Avenue Stonematt Skheme, Casablanca jade gloss, Skheme, Cement, Cement Australia, Arashi marble honed, Skheme, American Ash, Britton Timbers

## DETAIL JOINERY DRAWINGS



2 Section detail 2

# CLIENT BRIEF

- Select a venue that Three Blue Ducks has not yet ventured out in so that it differs from its existing restaurants' locations.
- Transform an existing site so that it correlates and maintains Three Blue Ducks brand, philosophy and personality.
- Offer unique experiences for guests that has not been explored in their previous venues.

# LOCATION

283 Bondi Road, Bondi NSW, 2026

# YEAR

2021

# PROJECT DESCRIPTION

Located at 283 Bondi Rd, Bondi NSW 2026, this site is the perfect space for the Ducks Table to take over. It is in a great area that is constantly thriving and evolving more and more each day. This location is the perfect distance from Bondi Beach meaning it will draw customers from foot traffic as well as people from different areas wanting an exquisite dining experience.

The Ducks Table is composed of one main open-aired courtyard with its main feature element being the outdoor kitchen. This has been constructed using a raw textural palette, combining soft neutral tones together, which pair well with the custom-made tile and wood tables, custom leather seats, and terrazzo benchtops. The open courtyard allows for natural light to flood through at every angle. Greenery and custom lighting are set up around the plan to give ultimate lighting once the sun goes down.

# SOFTWARE USED

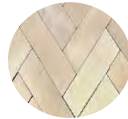
- 3ds Max
- SketchUp
- V-ray
- Revit

# THE DUCKS TABLE

## 3D VISUALISATIONS



## MATERIALITY



Clay Bejmat, Tiles of Ezra



Clay Zellige, Tiles of Ezra



Soft shell, Fibonacci Stone



Micro cement, Mineral fox

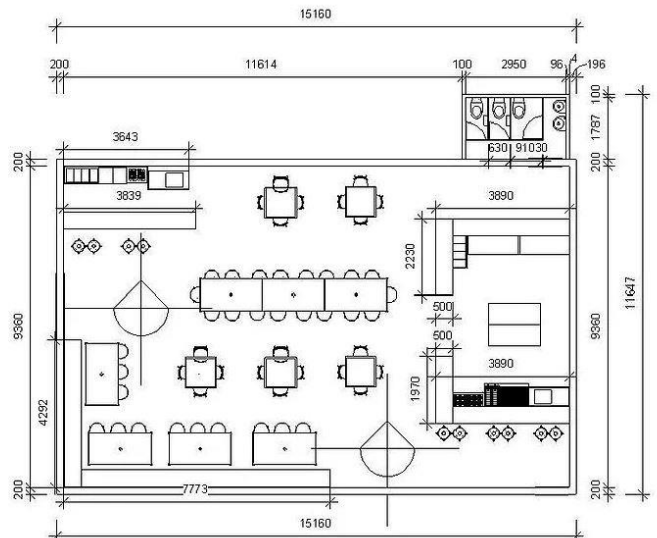


Fuse, Kvadrat/Raf simmons

## INSPIRATION BOARD



## FLOOR PLAN



# CLIENT BRIEF

- Design a sculptural element in a nominated site where this sculptural element could potentially become a landmark and public meeting place.
- Undertake a site field trip to familiarise yourself with the location for this project.
- The sculptural element should convey something about the nature the location and surrounding area.

# LOCATION

Town Hall Square

# YEAR

2020

# PROJECT DESCRIPTION

Sydney is an extremely diverse city with people migrating from many different countries including, New Zealand, India, China, Indonesia, England, and more. There are over 250 languages spoken alone in Sydney city which was formed by waves of immigration for over 200 years. Sydney does an excellent job at coming together to foster a vibrant, diverse and inclusive community that offers multiple multicultural programs and initiatives.

The meaning behind this design was multiculturalism. There were a few metaphors that enabled the foundation and layout of this design. These included the waterhole, self-expression, communal healing, reflections, and untangling beauty. From these metaphorical elements, the ropes that are one of the main features of the design all represent the different cultures present in our city. These ropes were decorated in Aboriginal art to show all the cultures coming together to support one another.

# SOFTWARE USED

SketchUp

# COOEE TOWER

## 3D VISUALISATIONS



## MATERIALITY



Form black matt, Skheme



Sandstone, Gosford Quarries



Tasmanian Oak, Britton Timbers



Aboriginal Painting



Avenue Mist, Skheme

## ANALOGUE MODEL



# CLIENT BRIEF

- Prepare a detailed documentation for bar area, staircase, joinery systems and final refined drawing for: floor plan, RCP, sections and elevations.
- Further develop and refine 3D model, creating a final comprehensive and professional documentation set using Revit® (on PC). This documentation set must comply with the BCA and Australian Standards requirements.

# LOCATION

48 Baywater Drive, Wentworth, NSW, 2127

# YEAR

2020

# PROJECT DESCRIPTION

Wentworth Point is a developing community, home to families and young professionals. Slowly, the land is being converted from warehouse factories to waterfront apartment housing. There is a strong coffee and bike culture present throughout inner Sydney. This will inform the design of the cafe and will become part of the local lifestyle here in Wentworth Point.

The design guidelines state a specific focus needs to be on sustainability, bold colours, food fusion, photography, industrial, and a cycling store. This will allow for a relaxed, eclectic atmosphere to be created while this community is growing.

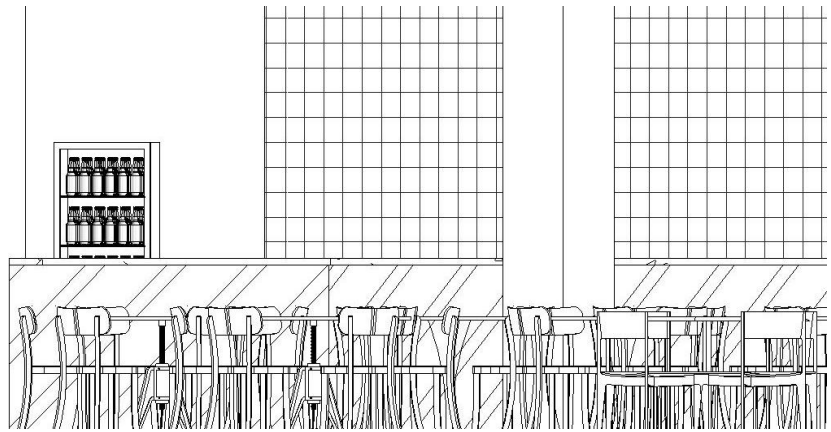
Design features such as an open floor plan, feature staircase, bike, pet-friendly services, access to natural light, and views of the waterfront all need to be taken into consideration whilst the client's needs are still met.

# SOFTWARE USED

Revit

# LE VELO CAFE

## 3D VISUALISATIONS



## MATERIALITY



Manhattan Chelsea, PGH Bricks



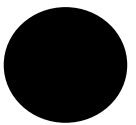
Natural Frost, PGH Bricks



Canvas, Kvadrat

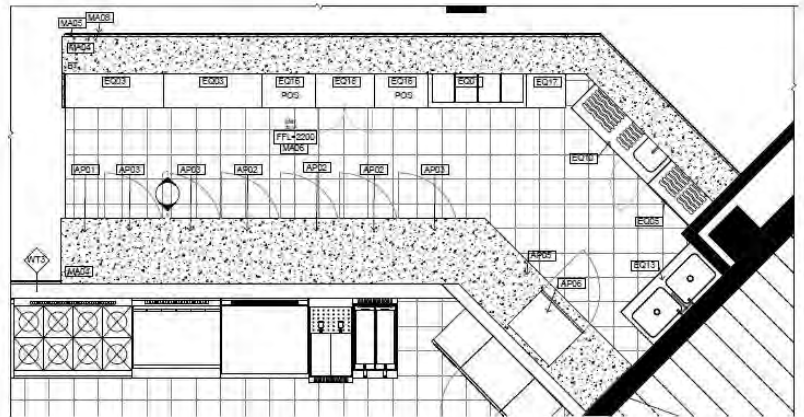


Matt white, Skheme

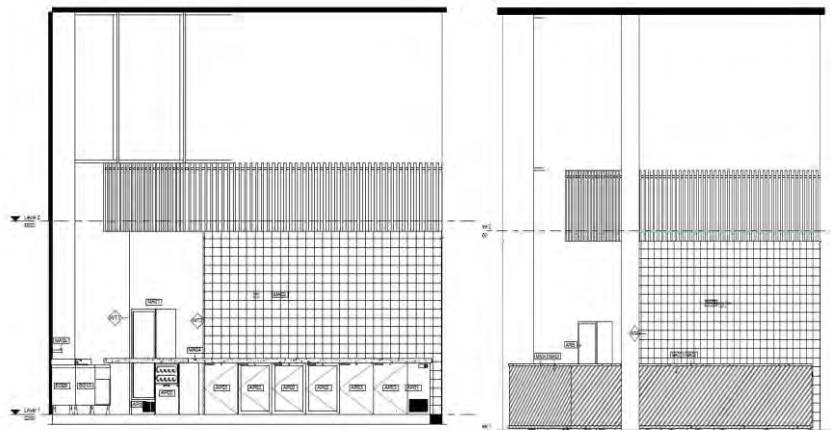


Colour: Black SG6G9, Dulux

## BAR DETAIL DOCUMENTATION



1 Bar Detail Plan  
1 : 20



1 Bar Elevation 2  
1 : 20